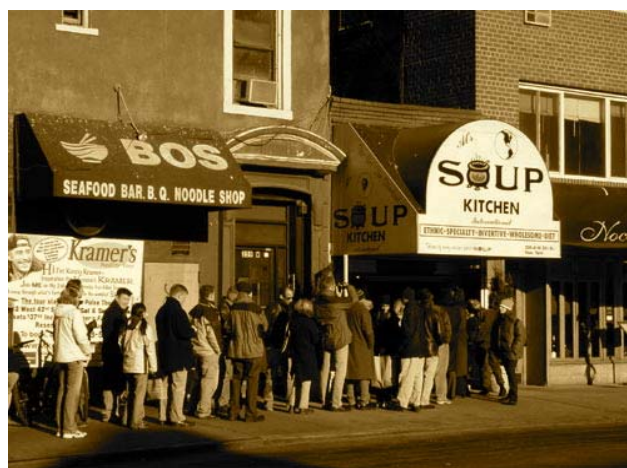


# The Great Recession or the Great Depression?

**Congress said NO to extended UC benefits and COBRA health care subsidies for the unemployed despite 9.7% “official” unemployment nationally!**

**The unemployment rate in Philadelphia is 11.3%!**

Tens of thousands are exhausting unemployment benefits right now and millions will exhaust unemployment benefits each month without an extension!



## Join Unemployed Workers for a Rally and Symbolic Soup Line at City Hall @ Dilworth Plaza on June 23<sup>rd</sup>

Help us fight for Extended Unemployment Benefits and COBRA subsidies for the jobless!

When: June 23<sup>rd</sup> from Noon-1:30 PM

Where: Philadelphia's City Hall- West side @ Dilworth Plaza

Who: Unemployed workers, labor and religious leaders, concerned people

Why: To Fight for Extended Unemployment Compensation, COBRA health care subsidies, and JOBS!

For more information contact Philadelphia Unemployment Project 112 N. Broad St. Philadelphia, PA 19102 215-557-0822 ext 108,  
[www.Philaup.org](http://www.Philaup.org) labor donated